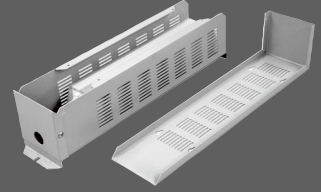


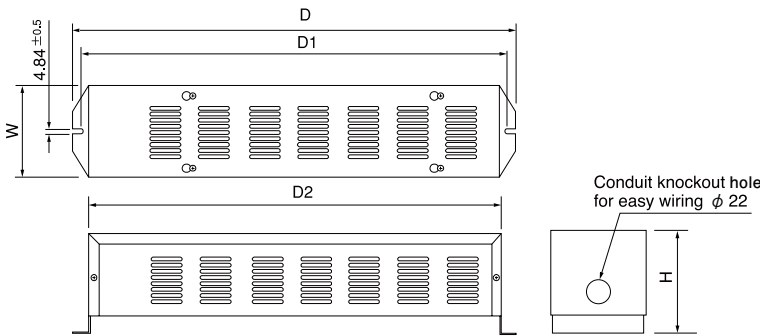
Load Resistor Box

Resistor Box for high power loads from 80W to 400W

Type	Wattage Rating in Free Air (W)	Resistance Range (Ω)		Resistance Tolerance	Operating Temp.	Weight (g)
		Inductive	Non-Inductive			
RA080	80	1.2~910	1.2~110	±5 (J) ±10 (K)	-55°C +200°C	980
RA100	90	1.2~1.1K	1.2~240			1000
RA200	140	1.2~2.2K	1.2~1K			2415
RA300	210	1.2~2.7K	1.2~1.5K			2530
RA400	240	1.2~4.3K	1.2~2.2K			2700
RA500	300	1.2~6.8K	1.2~3K			2920
RA600	320	1.2~94	1.2~23			3095
RA800	360	1.2~112	1.2~28			3430
RA1000	400	1.2~140	1.2~36			3725



Shape & Dimensions



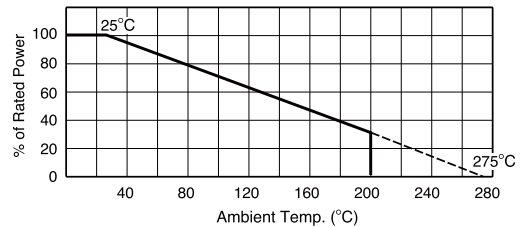
Type	Dimensions (mm)				
	W	H	D	D1	D2
RA080	78.5	67	254	240	224
RA100	78.5	67	254	240	224
RA200	93.5	105	440	426	410
RA300	93.5	105	440	426	410
RA400	93.5	105	440	426	410
RA500	93.5	105	440	426	410
RA600	93.5	105	440	426	410
RA800	93.5	105	440	426	410
RA1000	93.5	105	440	426	410

Performance

Parameters	Test Condition	Specification
Dielectric Strength	AC1500V 1min.	±(0.5%+0.05Ω)
Insulation Resistance	Load DC500V and measure the Insulation R.	20MΩ MIN
Short Time Over Load	5×Wattage Rating 5sec	±(2%+0.05Ω)
Thermal Shock	Wattage Rating 30min, -25°C 15min	±(2%+0.05Ω)
Moisture Resistance	Temp. 40°C Moisture 95% 1/10×Wattage Rating (1.5Hr ON 0.5Hr OFF) Repeat 500Hr	±(3%+0.05Ω) 5MΩ MIN
Temp. Coefficient	Standard Temp. +20°C, Test Temp. 0°C 120°C 200°C	±260ppm/°C
Load Life	Rated Power at Room Temp. (Chassis mounted), 1.5Hr ON 0.5Hr OFF Repeat 1000Hr	±(5%+0.05Ω)
Vibration	10Hz - 55Hz - 10Hz(1 min) Horizontal and vertical direction for 2 Hr each	±(2%+0.05Ω)

Operating temp. -55~+200°C

Ambient Temp. Derating Curve



How to order

RA500 N 2Ω J
Type Resistance Tolerance

Standard Resistance E-24 Series
J(±5%)

"N" for Non-Inductive wire winding

● Order for a single piece accepted for any resistance value within the standard resistance range

